



## 4 DAY CROC RIVER LODGE SAFARI

Our “Adult Friendly” Safari Lodge boasts spectacular views over the KRUGER PARK and lies on the banks of the Crocodile River which gives one the opportunity to view game directly from the lodge.

Situated just 200 meters from The KRUGER NATIONAL PARK’s Crocodile Bridge entrance gate, access to the Park is a 5 minute drive. Wildlife is abundant in this southern region so you would be unlucky not to see most of the BIG 5 during a leisurely day drive. After an exciting day’s game viewing, cool off in the viewing pool, sipping sun downers as we wait to be treated to each evening’s unique African sunset as it displays a kaleidoscope of colourful imagery.



## COLLECTION & DROP OFF

### Collection For Your safari:

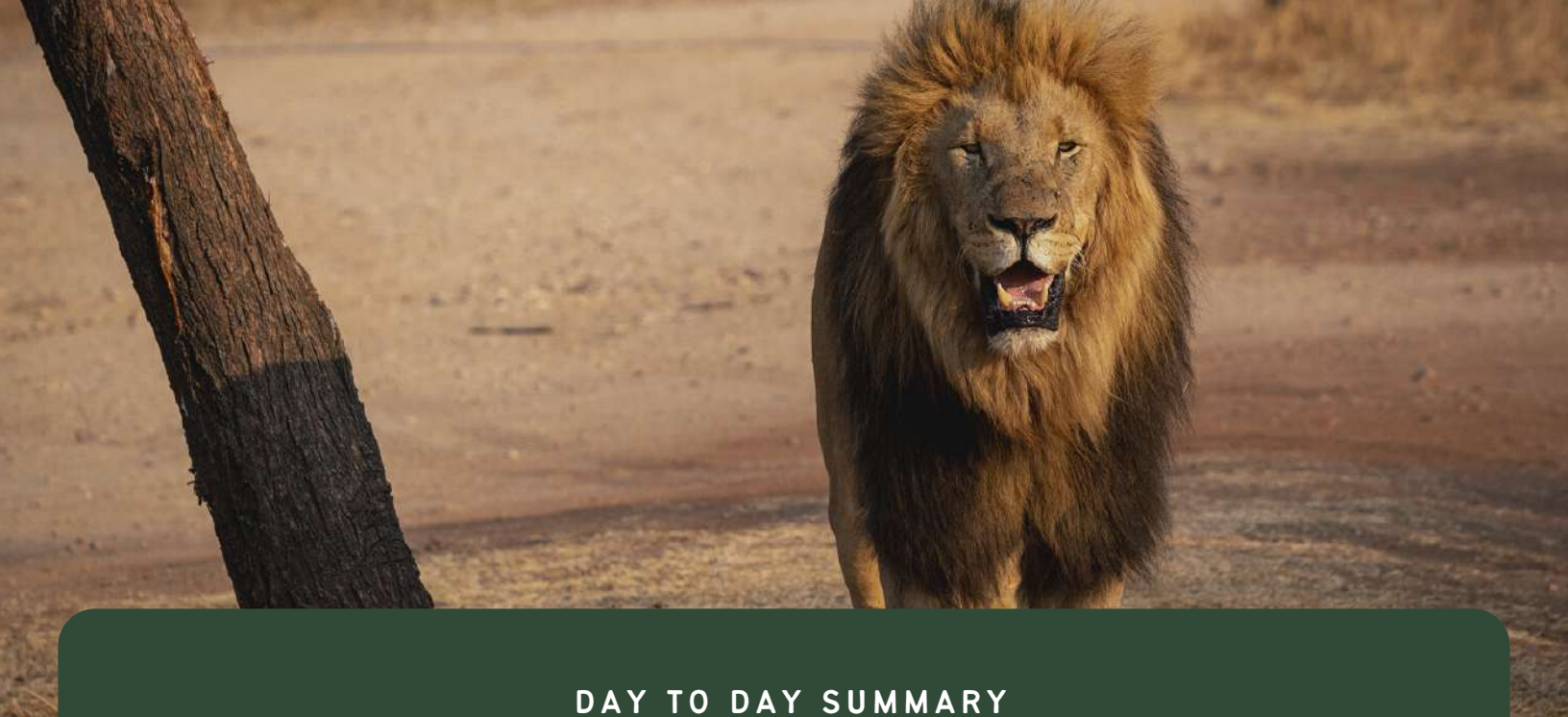
You will be picked up by your driver from your hotel in Johannesburg at 06h00am and be transferred to OR Tambo Airport to connect with our partner shuttle by 06h45am. Five or more guests will be transferred by Nhongo Safaris private shuttle.

Once in Nelspruit meet up with your guide and open safari vehicle and make your way to the Kruger National Park check in to your accommodation is at 14h00pm.

### Drop Off After Your Safari:

Our departure from the Kruger National Park takes place after breakfast and exits the camp by 10h30am , and we arrive back in Johannesburg between 16h00 and 18h00pm.





## DAY TO DAY SUMMARY

DAY

1

### JOHANNESBURG - CROCODILE BRIDGE

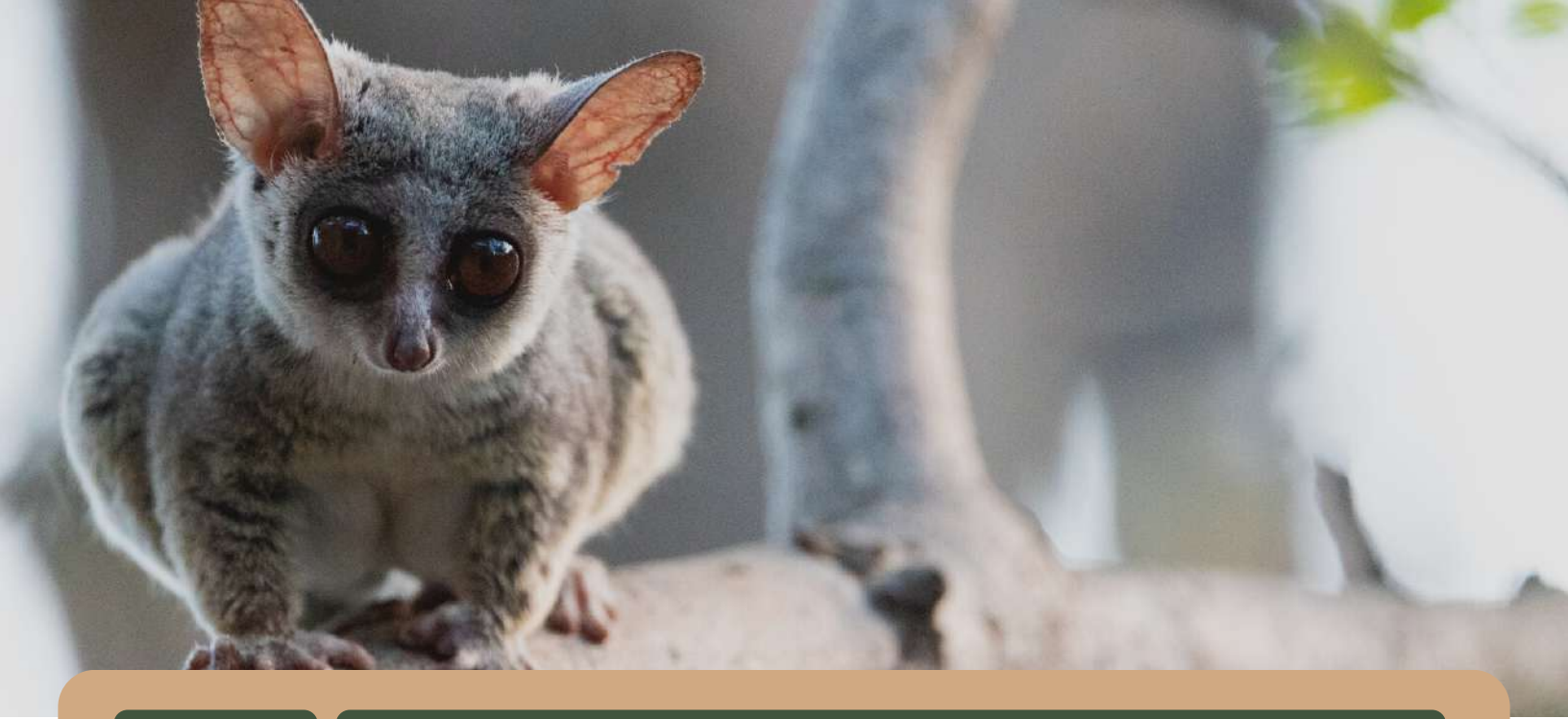
YOUR DRIVER/GUIDE WILL COLLECT YOU FROM YOUR HOTEL IN JOHANNESBURG AT 06H00AM. AFTER CHANGING OVER TO YOUR OPEN SAFARI VEHICLE YOU WILL THEN MAKE YOUR WAY TO THE CROC RIVER SAFARI LODGE FOR CHECK IN AT 14H00PM. DINNER IS SERVED AT 19H00PM

DAY

2

### KRUGER NATIONAL PARK

AFTER AN EARLY MORNING WAKEUP CALL AND TEA AND COFFEE WE MAKE OUR WAY INTO THE KRUGER NATIONAL PARK FOR A DAY FILLED WITH EXCELLENT SIGHTINGS. AFTER BREAKFAST WE CONTINUE OUR GAME VIEWING STOPPING OFF FOR LUNCH. DINNER IS SERVED IN THE BOMA OVERLOOKING THE KRUGER NATIONAL PARK.



DAY

3

### KRUGER NATIONAL PARK

AFTER AN EARLY MORNING WAKEUP CALL AND TEA AND COFFEE WE MAKE OUR WAY INTO THE KRUGER NATIONAL PARK FOR A DAY FILLED WITH EXCELLENT SIGHTINGS. AFTER BREAKFAST WE CONTINUE OUR GAME VIEWING STOPPING OFF FOR LUNCH. DINNER IS SERVED IN THE BOMA OVERLOOKING THE KRUGER NATIONAL PARK.

DAY

4

### KRUGER PARK - JOHANNESBURG

YOUR GUIDE WILL GET YOU UP BRIGHT AND EARLY THIS LAST MORNING AS TODAY IS THE DAY OF YOUR BUSH WALK WHICH IS CONDUCTED BY THE SANPARKS RANGERS. YOU WILL RETURN TO THE LODGE BY 08H30AM FOR BREAKFAST. WE DEPART THE LODGE BY 10H30AM FOR MBOMBELA AND THEN ON TO JOHANNESBURG



## SAFARI INCLUDES

- 3 Night Accommodation at Croc River lodge
- Collection & Drop Off in Johannesburg or Nelspruit
- Open Vehicle Game Drives
- Daily Conservation/Entrance Fees
- 3 x Dinners
- 3 x Breakfasts

## SAFARI EXCLUDES

- Flights
- All Drinks
- Gratuities
- Items of a Personal Nature
- Visas and Airport Tax





## ACCOMMODATION

This Safari includes three nights accommodation at Croc River Lodge These units are cleaned and serviced daily and feature twin or double beds, air-conditioning.

## MEALS

3 Dinners & 3 Breakfasts are included in the package. There are restaurant facilities available all serving hot delicious food and beverages



## GAME DRIVES

All daily Game Drives are included in the package and are conducted in open aired safari vehicles accompanied by an expert guide. The Open Safari vehicles have blankets and ponchos onboard for any weather changes.

## CHILDREN

No Children under 14 years old





## WHY BOOK WITH US?

- Guaranteed Departure with a minimum of two guests daily
- You save money – it costs less to book with us. No booking fees. No credit card surcharge
- Enjoy exceptional personalized service from your dedicated consultant
- Seamless travel arrangements – no travel stress
- Full financial protection – travel with confidence

## WHAT TO PACK?

- Sunglasses & Hat & Sunscreen
- Closed shoes or open sandals (No high heel shoes)
- Jacket for early mornings and evenings
- Camera, Binoculars, Flashlight
- Passport for entrance procedures
- Bug repellent – can be purchased in camp